



## Compact On-Air Control Solution

The TR-B Control Panel is designed for easy, effortless on-air operation. Using the Tally interface, the TR-B is able to follow the on-air camera providing the operator with a quick and reliable method of fine tuning camera positions.

The Control Panel is able to store 10 shots per camera, which makes the TR-B an ideal control panel for smaller systems as used on game shows and remote new facilities, as well as a fall-back unit in large multi-operator, multi-camera systems.

Ethernet and RS422 outputs give both forward and backward compatibility with all Shotoku robotic products as well as units from manufactures such as Radamec meaning that you don't need to replace entire systems at one-time during upgrades.

Advanced interface options provide connections to preview monitor switches, tally outputs, and production switches for auto-selection of the on-air camera as well as automation systems minimizing workload and therefore operator errors.

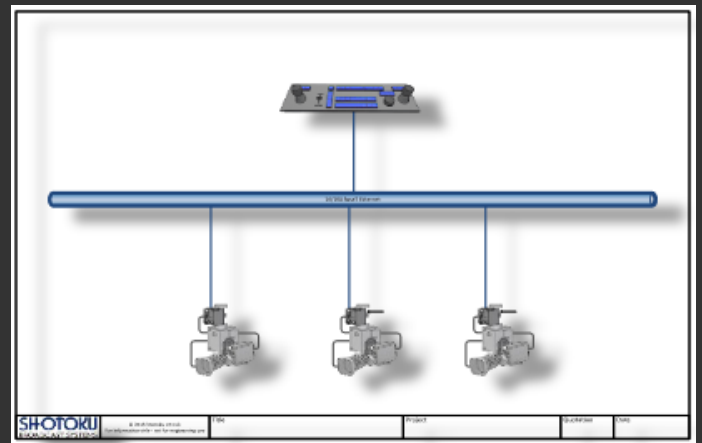
## Features

- Control up to 16 Cameras
- Automatic On-Air Camera Selection
- 10 Shots per Camera
- Simple Control System for On-Air Use
- Controls Existing Legacy Heads

## Applications

NEWS, SPORTS & CURRENT AFFAIRS

VR STUDIOS



TR-B System Configuration

## SPECIFICATIONS

### CONTROLS

3-Axis proportional joystick for Pan, Tilt, and Zoom  
 Assignable rotary encoders for Focus, Tilt, and Zoom.  
 Adjustable fade time  
 10 Individual Shot Selection Buttons  
 Individual Pan & Tilt reverse functions  
 16 Dedicated Camera Selection Keys with On-Air Tally  
 Fade, Cut, Swoop, and Stop

### CONNECTIONS

RS-422 & Ethernet camera control ports  
 RS-232 / RS-422 Automation interface  
 GPI In/Out Switcher Tally

### SIZE

19" Rack Mount, 3RU High

### POWER

100-240v AC 50/60Hz