



Robust frame

Reliable, accurate mechanical encoders offer versatility over infrared sensors or ceiling/floor targets and zero interference with studio lighting configurations

SPI-4 IP or SPI-5 and Power Supply Unit (TO-26) provide VR data output to the graphics computer via RS-422 or IP for accurate productions in real time

Continuously adjustable Reulaux Perfect Balance System for effortless tilts even with kits weighing upwards of 60kg

TE-23VR

PRODUCT

Heavy-Duty Studio / OB VR Head



Tilt Drag and Tilt Lock



Pan and Tilt Brake Controls



Integrated Carry Handle

State-of-the-art, the TE-23VR studio/OB VR tracking pan and tilt head is capable of perfectly balancing up to 60kg/132lbs and is most suitable for applications requiring camera systems equipped with a heavy box lens.

Along with the Shotoku high performance pan & tilt sensor system and fluid Viscam drag system, TE-23VR provides on-air accurate and stable VR data output to your graphic engine every time.

MAX. PAYLOAD

60kg / 132lbs

PAN / TILT RANGE

360° / ±60°

PLATFORM ADJUSTMENT

Forward: 63mm / 2.48", Backward: 17mm / 0.67"

COUNTERBALANCE

Reulaux Perfect Balance

DRAG

Viscam Continuously Adjustable Fluid-Leaf System

CAMERA FIXING

V-Wedge (TA-74) with 3/8" screws x2

PAN BAR

2 included (either TJ-38D, TJ-38E, TJ-59, or TJ-60)

WEIGHT

20 kg / 44lbs

MOUNT

M70 Mitchell or 4-Bolt Flat Base

RESOLUTION (PAN)

800,000 counts per 360°

RESOLUTION (TILT)

640,000 counts per 360°

DATA BOX CONNECTIVITY

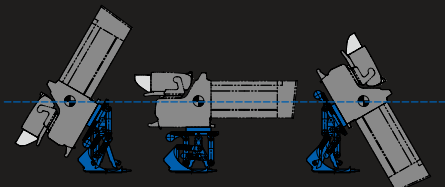
SPI-4 IP or SPI-5

SUITABLE TRIPOD/PEDESTAL

TT-17, TT-64, TP200VR, TP-90VR, TP-80VR

DIMENSIONS

W362 x H305 x D281mm



Reulaux Counterbalance System keeps Optical Center Constant